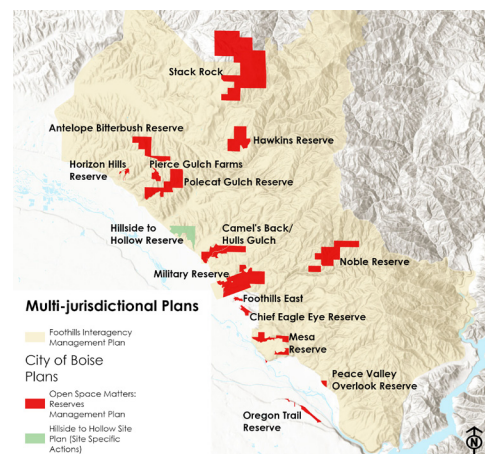


# BOISE CITIZEN FUEL REDUCTION POLICY

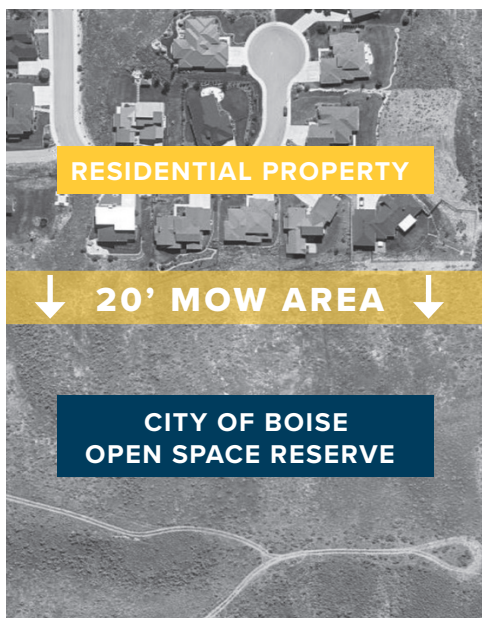
## WILDFIRE HAZARDS

Boise Open Space Reserves provide numerous recreation opportunities, native habitat, and wildlife experiences that make Boise a wonderful place to live, work and raise a family. However, when this land is adjacent to your home, it may be a wildfire hazard.

Much of the Boise foothills are covered in invasive grasses, such as cheatgrass and medusahead rye, which can build up a layer of flammable thatch. When a fire ignites, these grasses help flames travel quickly across the landscape.



## CITIZEN FUEL REDUCTION POLICY



**IF YOUR PROPERTY IS DIRECTLY ADJACENT TO CITY OF BOISE RESERVE LAND, THE CITIZEN FUEL REDUCTION POLICY WILL HELP YOU APPROPRIATELY REDUCE FIRE RISK ON LANDS NEXT TO YOUR HOME.**

This policy permits Boise homeowners living directly adjacent to city-managed reserves to cut invasive grasses 20 feet inside the reserve. Property owner's first line of defense is their own property. Make sure you have defensible space. By trimming invasive grasses 20 feet from the property line into Open Space Reserves, you increase the amount of defensible space between your home and adjacent wildlands.

### MITIGATION GUIDELINES

- A permit is required to mitigate wildfire risk on the adjacent lands.
- A string-trimmer with plastic blades or string is the only safe and acceptable way to remove vegetation. Metal blades or chains are strictly prohibited.
- Mitigation activities may only take place before or after fire season.
- All cut materials must be collected and removed from the site.
- To preserve soil stability, do not cut grass to less than 4". Native vegetation such as sagebrush must be left intact.

### CONTACT

**Martha Brabec**  
Foothills Restoration Specialist  
mbrabec@cityofboise.org  
208-608-7815 | TTY 800-377-3529

### LEARN MORE

You can find wildfire mitigation guidelines for Ada County, check for fire restrictions and learn how to adapt your home to reduce fire risks at [adafireadapted.org](http://adafireadapted.org).

